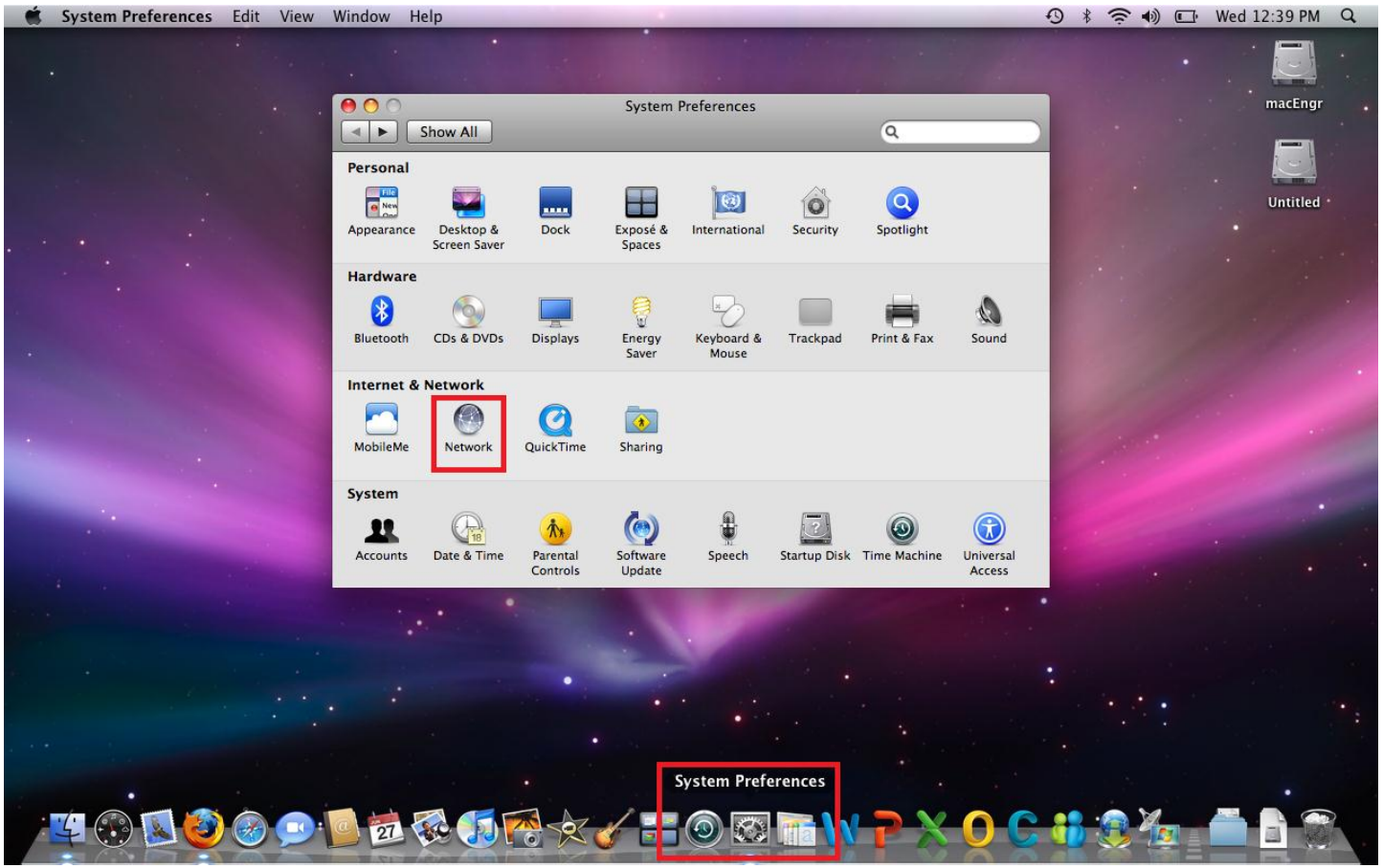
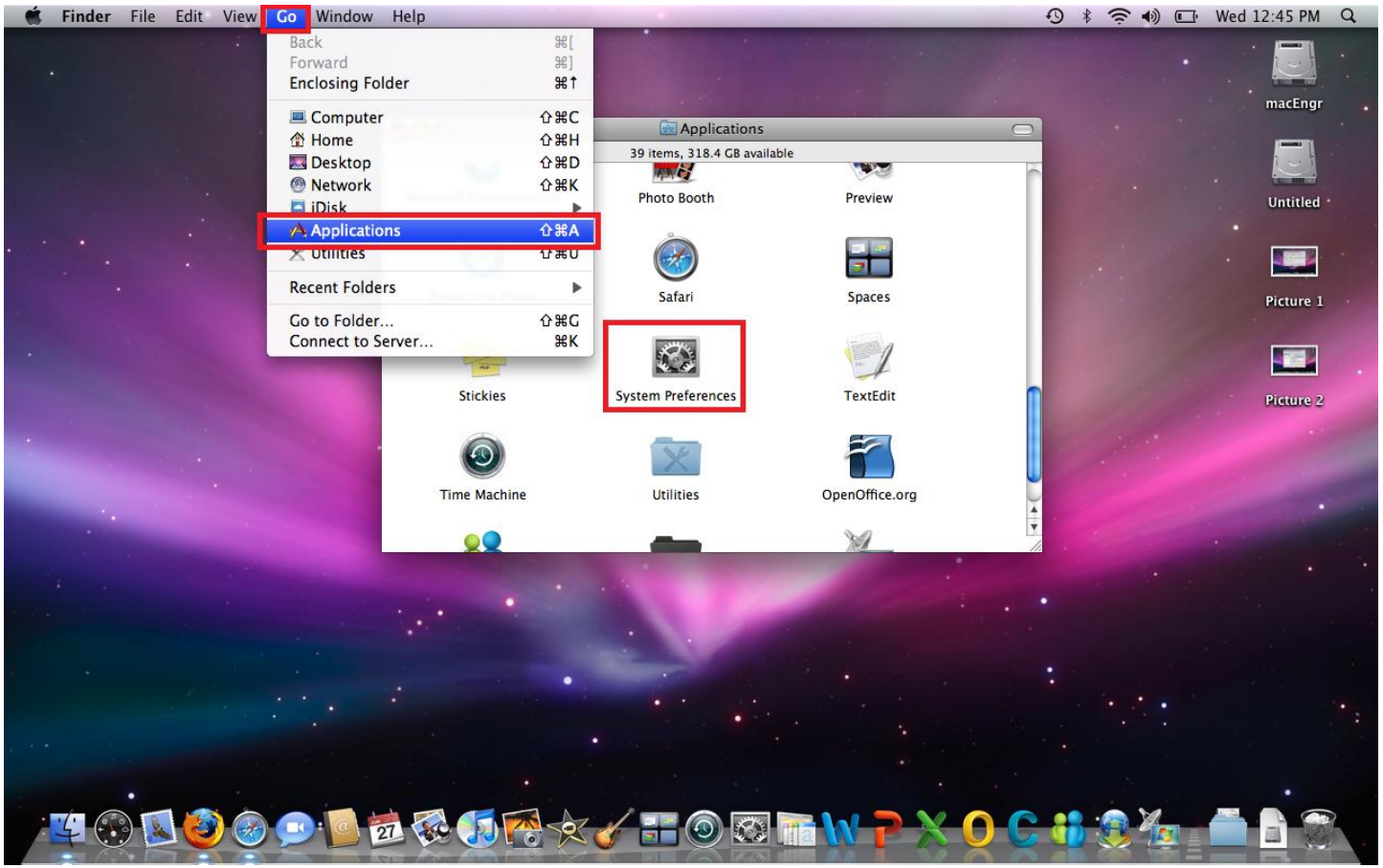


# Changing to DHCP on a MAC

1. Pick **System Preferences** from your object dock on the bottom.
2. Pick the **Network** options menu.



1. If you don't have **System Preferences** in your object dock, go to **Finder > Go > Applications**.
2. You'll find **System Preferences** near the bottom of the window that opens.



1. Pick your connection (**Ethernet** in this case).
2. In the **Configure** drop down menu, choose **Using DHCP**.
3. Click **Apply**. You're done. You can now close your settings.

